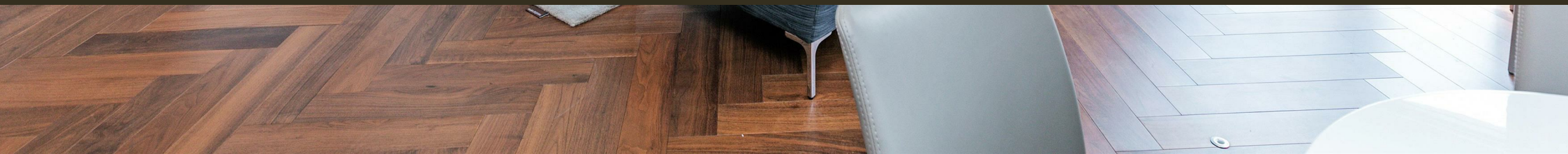




Embassy Gardens, Nine Elms
London SW11

GARTON JONES.COM



Embassy Gardens, Nine Elms London, SW11

GARTON JONES.COM

9 Albert
Embankment
London
SE1 7SP

Sales +44 (0) 20 7735 1888
nineelms@gartonjones.com
www.gartonjones.com

£800 Per Week

A spacious 1-bedroom apartment of approx. 605sq.ft (57sqm) available to rent in Capital Building, Embassy Gardens, a popular residential development in the heart of the Nine Elms Regeneration. This apartment has an open plan reception room with a large balcony and great storage. There is a smart integrated kitchen, good storage and a luxury bathroom suite. Interiors boast high ceilings, walnut parquet flooring, marble counter tops in the kitchens and thermostatically controlled comfort cooling and heating. For the residents' private use there is a 24-hour concierge, cinema screening room, library & lounge, business centre, yoga studio, 2 private gymnasiums, and a very cool indoor/outdoor swimming pool. Residents of Embassy Gardens also have access to the world-famous sky pool, connecting two of the towers at Legacy Building. Amenities such as District coffee shop, Darbys' restaurant, The Alchemist cocktail bar, as well as a Waitrose convenience store are located on-site but you are also close to a host of other local shops and restaurants on your doorstep. Nine Elms Tube Station is less than a 5 minutes' walk from Legacy Building providing easy access into Central London and the transport links of Vauxhall Station are also within walking distance.

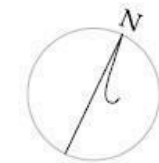
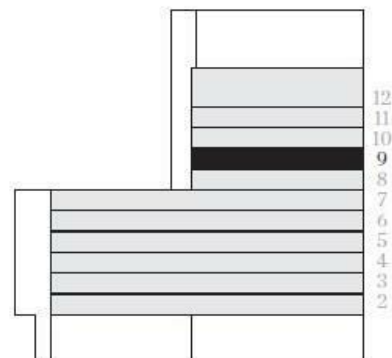
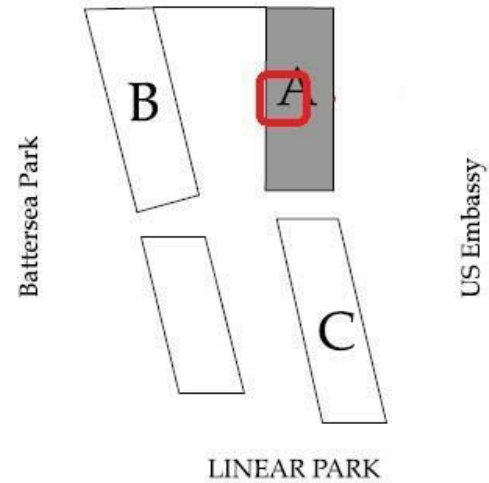
Wandsworth Council Tax Band E - £1,117.29 per annum
12 Month Minimum Term
5 Week Security Deposit

- 1 Bedroom
- 604sq.ft (56.1sq.m)
- Open Plan Reception
- Good Storage
- Winter Garden
- 2 Residents Gyms
- Sky Pool
- Cinema Screening Room
- 24 Hour Concierge
- 0.4 Miles from Battersea Power Station Tube Station



EPC certificate available on request.

Central London Thames River



1 Bedroom

Total area:
56.1 sqm / 604 sqft

Living area:
5200 x 7940 mm

Bedroom:
3200 x 4245 mm

Winter Garden:
4.7 sqm

